

# NM NRCS Programs

**Kris Graham Chavez**  
**505-761-4404**





## Environmental Quality Incentives Program (EQIP)



- Provides financial and technical assistance to agricultural producers to plan and implement conservation practices that improve soil, water, plant, animal, air and related natural resources on agricultural land and non-industrial private forestland. environmental regulations.

## Conservation Stewardship Program (CSP)



- CSP provides financial assistance (FA) to farmers and ranchers actively manage/maintain existing conservation systems
- FA for adding conservation activities on agricultural production land.
- CSP authorizes enrollment of an additional 10 million acres for fiscal years 2014-2018.



## Agricultural Conservation Easement Program (ACEP)



**FRPP**



**GRP**



**WRP**

## Conservation Innovation Grants (CIG)



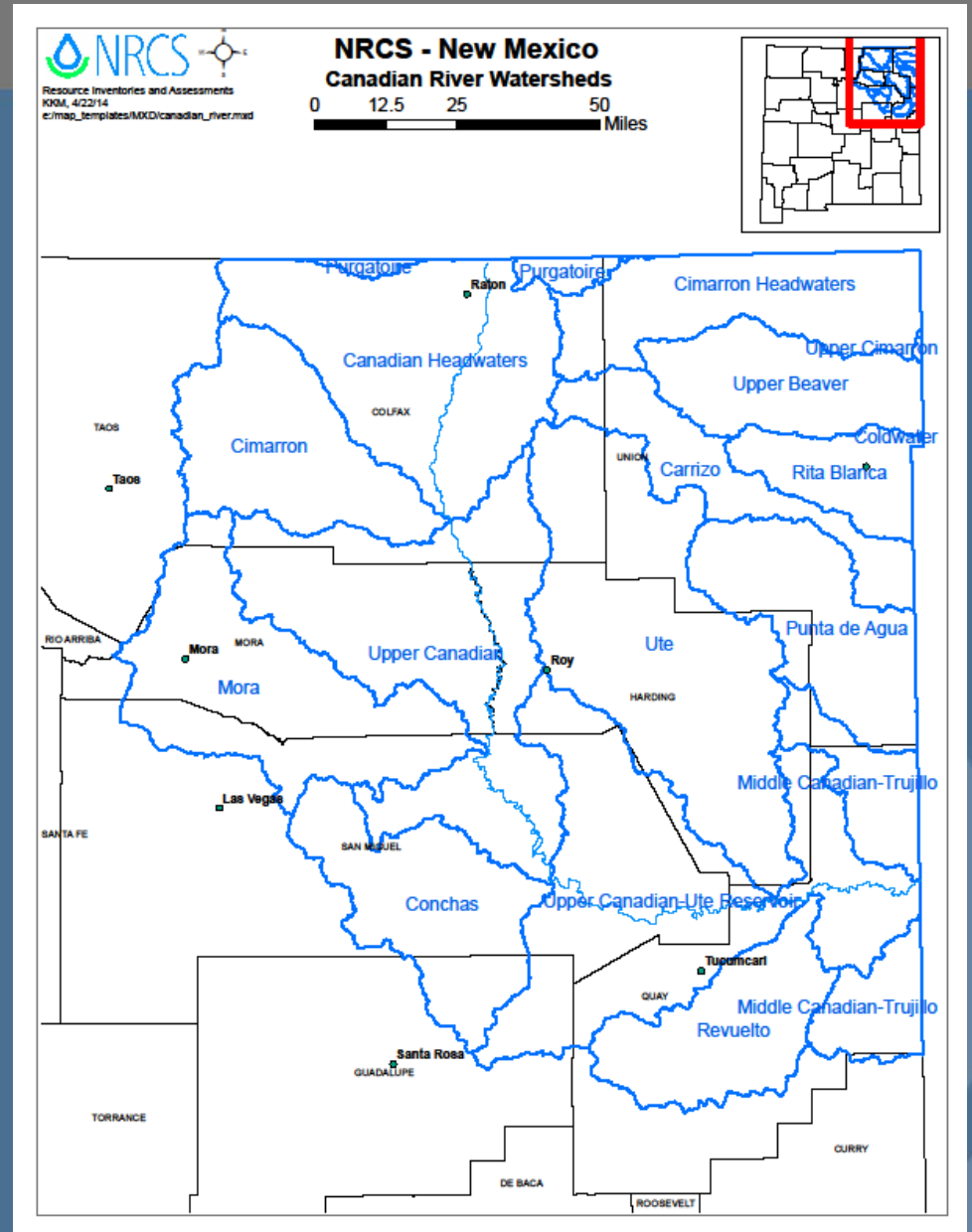
The purpose of CIG is to apply or demonstrate previously proven technology. CIG is still part of EQIP. We have allocated \$75,000 for the CIG program.

# RCPP

- Promotes coordination between NRCS and its partners to deliver conservation assistance to producers and landowners.
- NRCS provides assistance to producers through partnership agreements and through program contracts or easement agreements.
- Assistance is delivered in accordance with the rules of EQIP, CSP, ACEP and HFRP; and in certain areas the Watershed Operations and Flood Prevention Program.

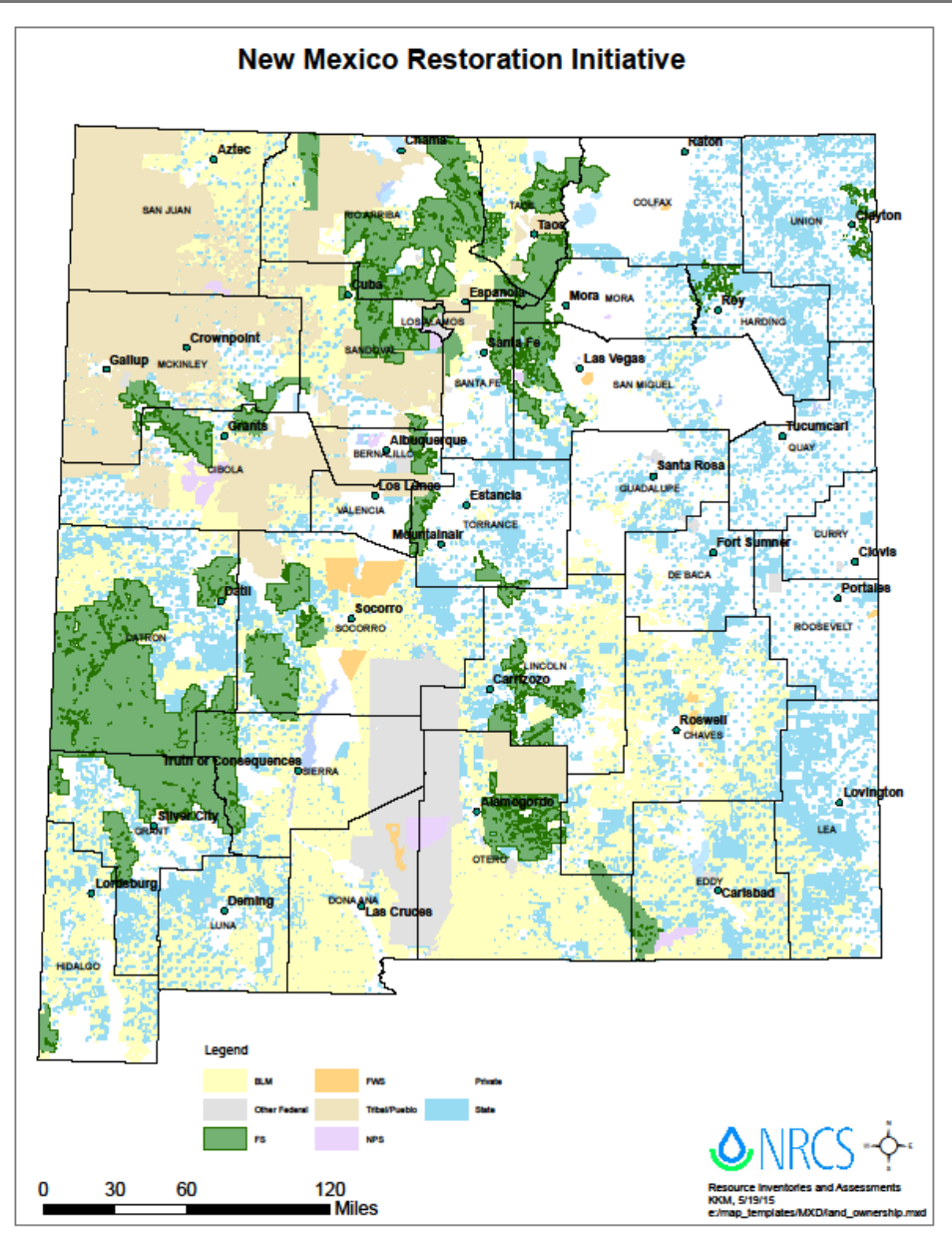
# Canadian River RCPP

- Critical Conservation Area
  - ✓ Prairie Grasslands Region
- 66 Applications/27 Contracts
- Received \$1,600,000.00 FA



# Restoration RCPP

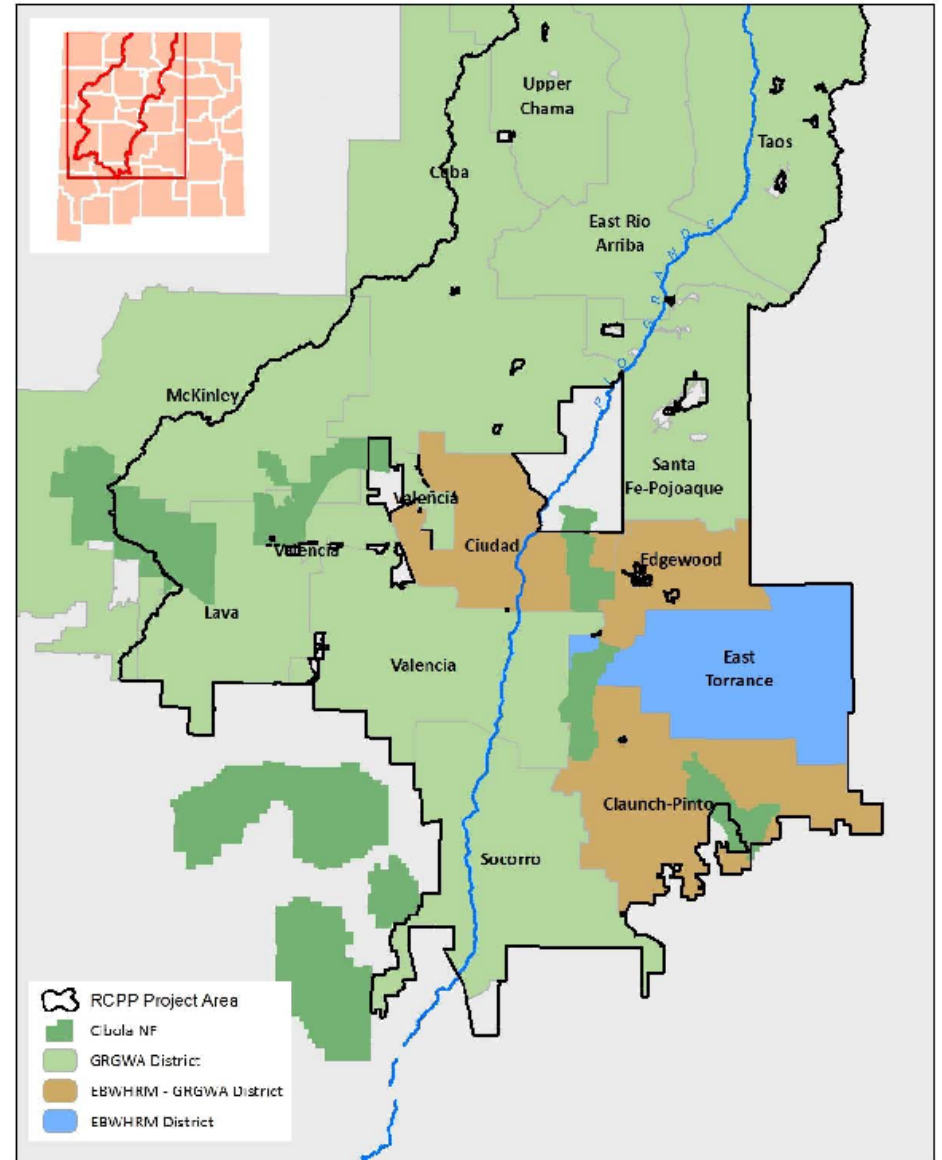
- National Category
- 67 Applications/21 Contracts
- CRMP's
- FA \$3,300,000





# North Central RCPP

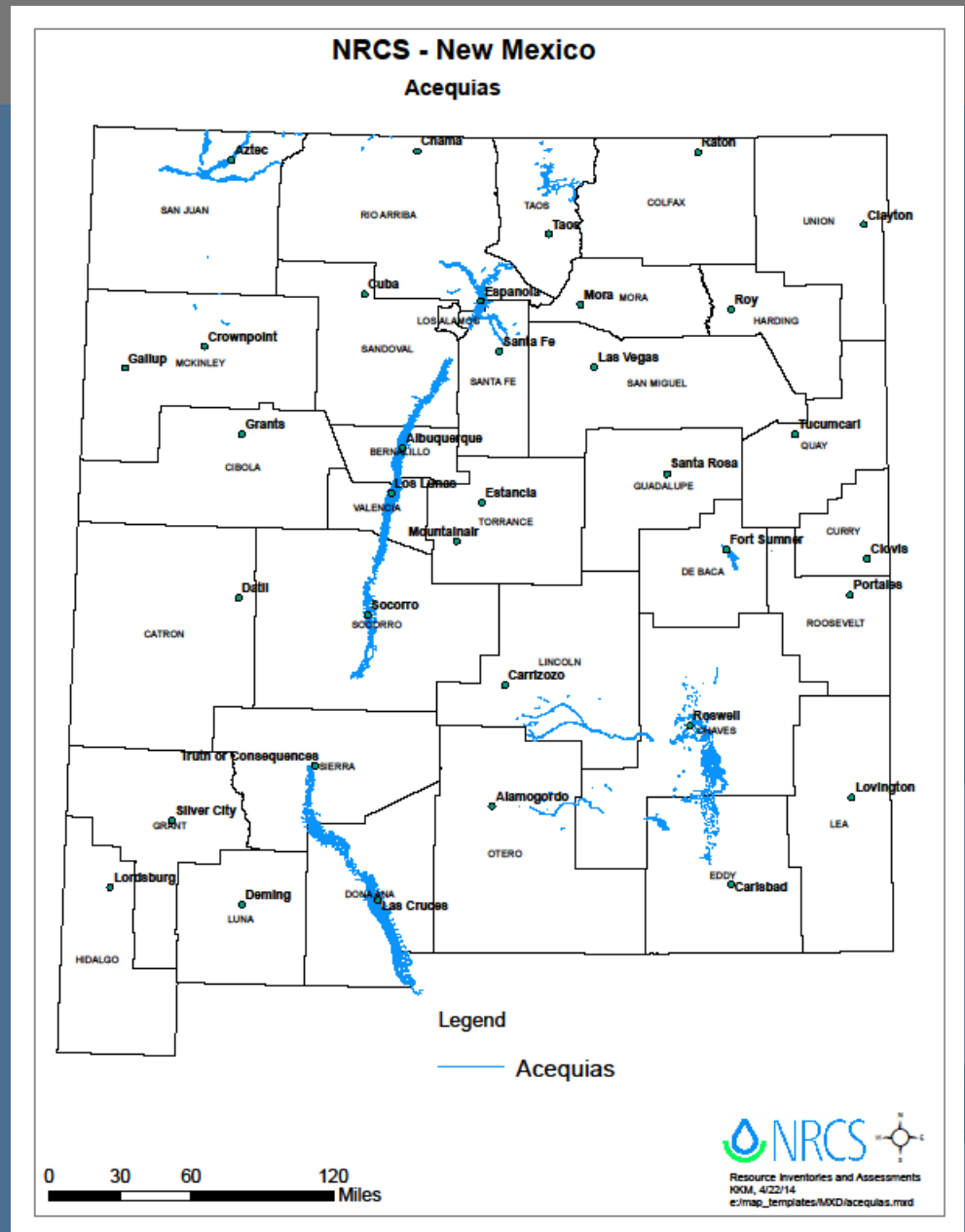
- State Category
- 16 Applications
- 1 CRMP
- FA \$1,638,485.00



*Project Area and Participating SWCDs*

# Acequia RCPP

- State Category
- 6 completed projects
- Alternative Funding Arrangement
- FA \$900,000.00



# 2016 RCPP Projects

- North Central New Mexico Restoration Initiative
- NM Acequia Revitalization in Historic Irrigated Lands





# 2017 RCPP Projects

- **Canadian River Watershed Restoration Project**
- **New Mexico Range and Forest Soil Health Initiative**
- **Building Resiliency in the San Juan-Rio Chama Region**
- **New Mexico Acequia Revitalization on Historic Lands**
- **North Central NM Watershed Restoration Project**

# 2018 Deadlines

- April 21, 2017: Pre-proposal applications
- June 26, 2017: Announcement of selected pre-proposals
- August 31, 2017 Full proposal applications
- November, 2017: Announcement of selected full proposals

# National Initiatives

## Impacting New Mexico

- ***Lesser Prairie Chicken***
- ***Ogallala Aquifer***
- ***Resiliency to Climate Change***
- ***National Water Quality***
- ***Strike Force***
- ***Landscape Initiative (Joint Chiefs')***
- ***Drought***
- ***Working Lands for Wildlife***
- ***WaterSMART***



# NRCS New Mexico-Driven Initiatives

- *Tribal*
- *Acequias*
- *Watershed*
- *Burned Lands*
- *High Tunnel*
- *Energy*
- *Organic*



# Joint Chiefs ' Landscape Restoration

## The Isleta – Chilili Land Grant Project

### Large scale wildfires

- Landscape scale treatments

### Reduce the potential of wildfires and loss

- Communities
- Cultural Resources
- Natural Resources

## State Technical Committees

- Approximately 75-member group that fulfills a key partnership and advisory function
- These individuals provide information, analyses, and recommendations on implementing USDA conservation programs and NRCS state-managed initiatives



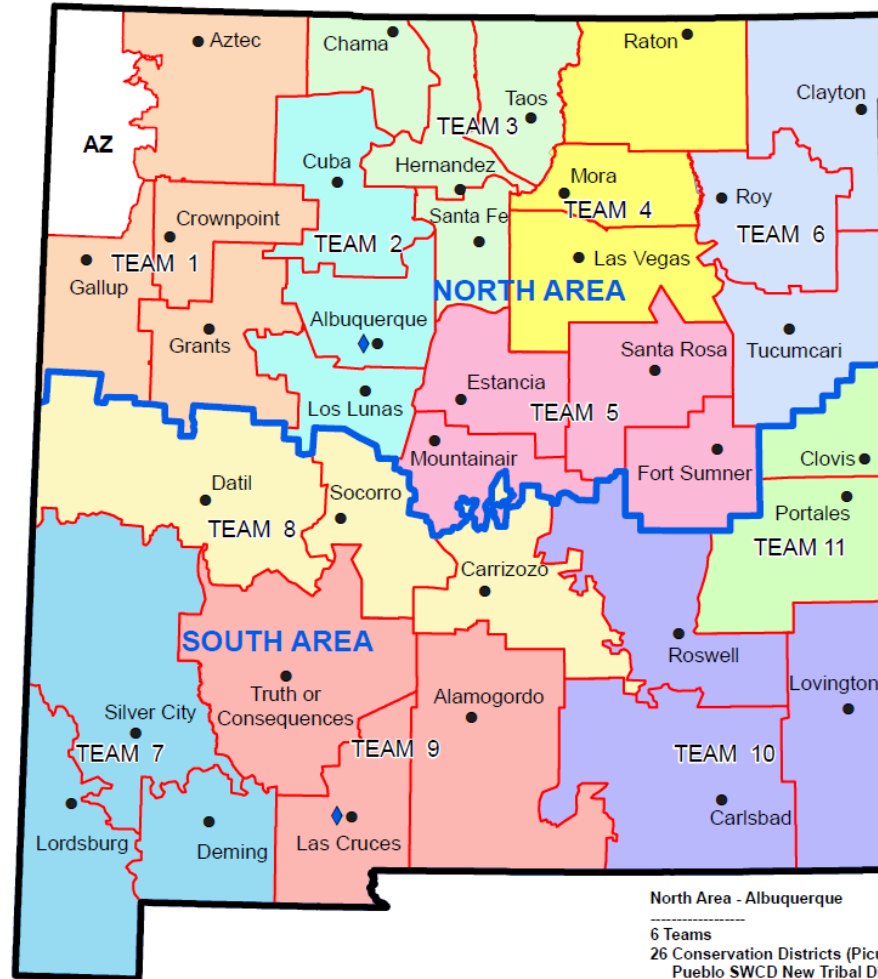
# Local Work Groups

- Need to be established and hold -- at a minimum -- one official LWG meeting to prepare for EQIP.
- Will be convened by the Soil and Water Conservation Districts and will establish its own working procedures, including:
  - Organization
  - Decision-making procedure
  - Meeting dates, including timely notification of members
  - Recording and distributing Local Work Group considerations, actions and decisions
  - Others as deemed necessary

# How to Use These Programs

- Contact your nearest NRCS office
- Ask for a natural resource inventory of your land
- With help from NRCS, **build a conservation plan**
- Apply for EQIP and CSP, whichever is applicable

## NRCS - New Mexico Administrative Areas



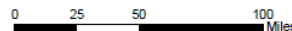
**North Area - Albuquerque**  
 -----  
 6 Teams  
 26 Conservation Districts (Picuris  
 Pueblo SWCD New Tribal District)  
 23 Nations, Tribes, and Pueblos

**South Area - Las Cruces**  
 -----  
 5 Teams  
 22 Conservation Districts

2 Nations, Tribes, and Pueblos



Resource Inventories and Assessments  
 KKM, 3/13/15  
 e:\map\_templates\mxd\NM\_admin\_15.mxd





# Eligibility

- Be a person, legal entity, Indian Tribe, native corporation, or joint operation with signature authority.
- Be engaged in agricultural production or have control of non-industrial private forestlands;
- Establish farm records with the Farm Service Agency (FSA) which requires providing social security numbers for all applicants and members of an entity;
- Have control of the land for the life of the proposed contract

- Receive written permission from the land owner
- Be in compliance with the Highly Erodible Land (HEL) and Wetland Conservation (Swampbuster) compliance provisions of the 1985 Food Security Act; Conservation Compliance webpage
- Have income levels that are below the adjusted gross income (AGI) requirements set by the 2014 Farm Bill and allow FSA to confirm AGI with the IRS;
- Be within the payment limitations of the program;
- Have an active DUNS registration in the System for Award Management ([www.sam.gov](http://www.sam.gov) offsite link image ) and be able to annually renew the registration for the length of the contract if applying under an EIN;

- Not be presently debarred, suspended, proposed for debarment, declared ineligible, or voluntarily excluded from covered transactions by any Federal department or agency; Have not within the three-year period preceding this agreement had a criminal conviction or civil judgment rendered against them for commission of fraud in connection with obtaining, attempting to obtain, or performing a public (Federal, State or local government) contract, including violation of Federal or State antitrust statutes or commission of embezzlement, theft, forgery, bribery, falsification or destruction of records, making false statements, or receiving stolen property; Are not presently indicted for or otherwise criminally or civilly charged by a governmental entity (Federal, State, or local) with commission of any of the offenses set forth above in Paragraph 14D(1)(b) of this certification; and Have not within the three-year period preceding this agreement had one or more public contracts (Federal, State or local) terminated for cause or default.



## *Top Seven Practices Across New Mexico*

<b>Practice</b>	<b>Enrolled Acres</b>	<b>Extent</b>	<b>Number</b>	<b>Financial Assistance</b>
Brush Management	3,013,253.71	197,509 Acres	295	\$6,774,141.25
Livestock Pipeline	3,104,581.3	135,2990 Feet	218	\$2,300,046.08
Fence	1,900,167.21	119,4712 Feet	151	\$2,106,531.08
Forest Stand Improve- ment	155,618.58	1,683 Acres	76	\$1,853,130.34
Sprinkler System	2,967.1	1,760 Acre	34	\$1,796,137.25
Conservation Crop Rotation	8,139.15	6,866 Acres	66	\$1,737,536.15
Irrigation Pipeline	4,905.75	102,908 Feet	104	\$1,466,928.83

# Watering Facility – Livestock Storage Tank



# Pumping Plant - Solar Pump





# Forest Stand Improvement





# Brush Management



# Concrete Ditch Lining





# Irrigation System - Center Pivot



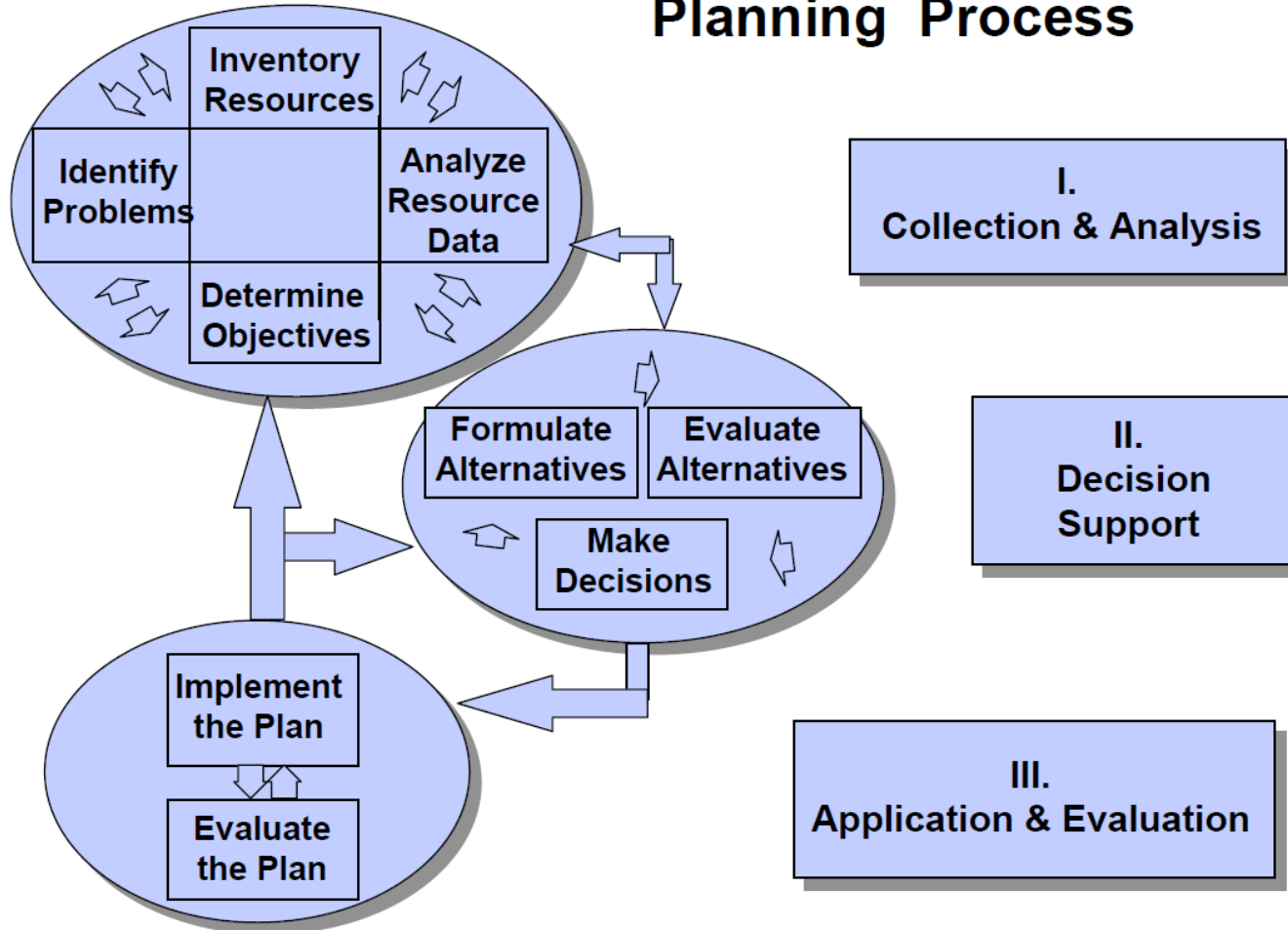
# Conservation Planning

- Step 1. Identify Problems**
- Step 2. Determine Objectives**
- Step 3. Inventory Resources**
- Step 4. Analyze Resource Data**
- Step 5. Formulate Alternatives**
- Step 6. Evaluate Alternatives**
- Step 7. Make Decisions**
- Step 8. Implement Plan**
- Step 9. Evaluate the Plan**



# Conservation Planning

## Planning Process



An illustration of the dynamic nature of the planning process.



# Resource Concerns

- Degraded Plant Condition: Undesirable Plant Productivity and Health
- Degraded Plant Condition: Excessive Plant Pest Pressure
- Livestock Production Limitation: Inadequate Feed and Forage
- Livestock Production Limitation: Inadequate Water

# What is in a Conservation Plan?

- An aerial photo or diagram of your farm or ranch
- A map of the soils on your farm or ranch and descriptions of those soils
- Information on grasses, trees, and broad-leafed plants that grow on your farm or ranch
- Resource inventory data which can include crop production potential, engineering designs and support data, and potential livestock and wildlife carrying capacity
- The location and schedule for applying conservation practices
- A plan of operation and maintenance for conservation systems of practices
- Job sheets and fact sheets

### Location Map

Customer(s): ██████████

Field Office: LOS LUNAS SERVICE CENTER

Agency: USDA-NRCS

Approximate Acres: 103137.1

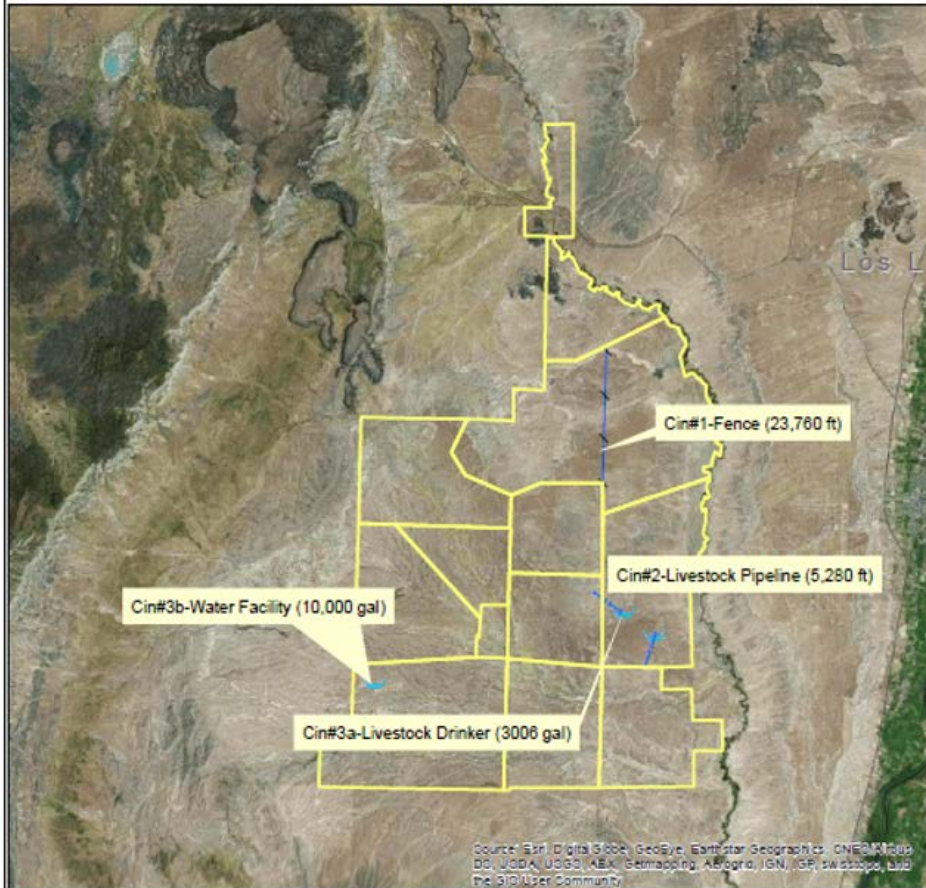
Assisted By: Michael Jones

Legal Description: F1565 T2737

73,822 ac.

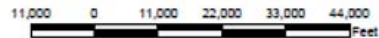
State and County: NM, Valencia County, New Mexico

Date: 1/28/2016



Source: Esri, Digital Globe, GeoEye, Earthstar Geographics, CNES/Airbus, DELTA Imaging, USDA, USGS, AeroGRID, IGN, IGP, Swisstopo, and the GIS User Community

Legend		Practice name	Practice name
	EQIP2016 Practices (polylines)		Fence
	<all other values>		Livestock Pipeline
			Livestock Drinker
			Water Facility
			Water Well
			Pumping Plant
			<all other values>





USDA LOS LUNAS SERVICE CENTER  
2600 PALMILLA RD  
LOS LUNAS, NM 87031  
5058654643 ext. 3

PEARL ARMUJO  
DISTRICT CONSERVATIONIST

### Conservation Plan



Range Tract: 2737

Fence  
Construct a fence for use as a barrier to wildlife, livestock, or people.

Field	Planned Amount	Month	Year	Applied Amount	Date
Metate	23760 ft	12	2016		
Total:	23760 ft				

Livestock Pipeline  
Install a pipeline to convey water from supply source to points of use.

Field	Planned Amount	Month	Year	Applied Amount	Date
Puerco	5280 ft	12	2017		
Puerco	5280 ft	9	2017		
Total:	10560 ft				

Prescribed Grazing  
Grazing will be managed according to a schedule that meets the needs of the soil, water, air, plant and animal resources and the objectives of the resource manager.

Field	Planned Amount	Month	Year	Applied Amount	Date
Coyote	14612.3 ac	1	2016		
Coyote	14612.3 ac	1	2017		
Metate	21182.4 ac	1	2016		
Metate	21182.4 ac	1	2017		
Number4	8829.7 ac	1	2016		
Number4	8829.7 ac	1	2017		
Puerco	10893.5 ac	1	2016		
Puerco	10893.5 ac	1	2017		
Total:	55517.9 ac				

### Upland Wildlife Habitat Management

Create, maintain or enhance area(s) to provide upland wildlife food and cover.

Field	Planned Amount	Month	Year	Applied Amount	Date
Coyote	14612.3 ac	1	2016		
Coyote	14612.3 ac	1	2017		
Metate	21182.4 ac	1	2016		
Metate	21182.4 ac	1	2017		
Number4	8829.7 ac	1	2016		
Number4	8829.7 ac	1	2017		
Puerco	10893.5 ac	1	2016		
Puerco	10893.5 ac	1	2017		
Total:	55517.9 ac				

### Watering Facility

Install a water drinking facility for livestock and/or wildlife.

Field	Planned Amount	Month	Year	Applied Amount	Date
Coyote	1 no	12	2016		
Coyote	1 no	12	2017		
Puerco	1 no	9	2017		
Puerco	1 no	12	2017		
Total:	4 no				

US DEPARTMENT OF AGRICULTURE  
NATURAL RESOURCES CONSERVATION SERVICE

## CONSERVATION PLAN OR SCHEDULE OF OPERATIONS

NRCS-CPA-1155  
02/2014

<b>PARTICIPANT</b> [REDACTED]	<b>COUNTY AND STATE</b> [REDACTED]	<b>PROGRAM AND CONTRACT NUMBER</b> EQIP 2014 [REDACTED]	<b>SUBACCOUNT</b> Los Lunas - Grazed Range - SD - [REDACTED]	
<b>LAND UNITS OR LEGAL DESCRIPTION</b> Farm: 1585 Tract(s) 2737.		<b>WATERSHED</b> 130202040904-Rio Puerco	<b>ACRES</b> 55517	<b>EXPIRATION DATE</b> 12/31/2018

**Contract Item 1: Fence(382)** **Practice Lifespan: 20 years** **Status: Planned 2017**

Construct a fence for use as a barrier to wildlife, livestock, or people.

Fields:

Tract: 2737 Fields: Metate;

Contract Item	Planned Conservation Treatment	Planned Amount	Unit Cost	Cost Share Rate/Method	COMPLETION SCHEDULE AND ESTIMATED COST-SHARE OR PAYMENT BY YEAR													
					2017 \$													
1	Fence(382)	23760 ft			45,382													
1a	HU-Multi Strand Barbed/Smooth Wire	23760 Ft	\$1.9100/ Ft	PR'	45,382													

Notes: \*Payment rates define the unit cost rate of compensation to be received by the participant.

**Contract Item 2: Livestock Pipeline(516)** **Practice Lifespan: 20 years** **Status: Planned 2017**

Install a pipeline to convey water from supply source to points of use.

Fields:

Tract: 2737 Fields: Puerco;

Contract Item	Planned Conservation Treatment	Planned Amount	Unit Cost	Cost Share Rate/Method	COMPLETION SCHEDULE AND ESTIMATED COST-SHARE OR PAYMENT BY YEAR													
					2017 \$													
2	Livestock Pipeline(516)	5280 ft			10,032													
2a	HU-1.25 In 160 psi PVC-SDR per Ft	5280 Ft	\$1.9000/ Ft	PR'	10,032													

Notes: \*Payment rates define the unit cost rate of compensation to be received by the participant.

**Contract Item 3: Watering Facility(614)** **Practice Lifespan: 20 years** **Status: Planned 2017**

Install a water drinking facility for livestock and/or wildlife.





**Fields:**

Tract: 2737 Fields: Puerto;

Contract Item	Planned Conservation Treatment	Planned Amount	Unit Cost	Cost Share Rate/Method	COMPLETION SCHEDULE AND ESTIMATED COST-SHARE OR PAYMENT BY YEAR										
					2017 \$										
3	Watering Facility(614)	1 no			14,111										
3a	HU-Permanent Drinking/Storage >1000-5000 Gals	3006 Gal	\$1,7000/ Gal	PR <sup>1</sup>	5,111										
3b	HU-Permanent Drinking/Storage >5000 Gals	10000 Gal	\$0,9000/ Gal	PR <sup>1</sup>	9,000										

**Notes:** <sup>1</sup>Payment rates define the unit cost rate of compensation to be received by the participant.

Total Cost-Share or Payment by Year										Total Contract Payment
Year	2017									
Amount(\$)	\$69,525									\$69,525

- NOTES: A. All items numbers on form NRCS-CPA-1155 must be carried out as part of this contract to prevent violation.  
 B. When established, the conservation practices identified by the numbered items must be maintained by the participant at no cost to the government.  
 C. All cost share rates are based on average cost (AC) with the following exceptions:  
 AA = Actual cost not to exceed average cost; FR = Flat Rate; NC = Non cost-shared; AM = Actual cost not to exceed a specified maximum; PR = Payment rates.  
 D. By signing, the participant acknowledges receipt of this conservation plan including this form NRCS-CPA-1155 and agrees to comply with the terms and conditions here of.

**Certification of Participants**

Signature	Date	Signature	Date	Signature	Date

**Signatures of Reviewing Officials**

Designated Conservationist - Technical Adequacy Certification Signature: PEARL ARMIJO Date: 6/9/2016	NRCS Approving Official Signature: Date:
--	--

## USDA Non-Discrimination Statement

The U.S. Department of Agriculture (USDA) prohibits discrimination against its customers. If you believe you experienced discrimination when obtaining services from USDA, participating in a USDA program, or participating in a program that receives financial assistance from USDA, you may file a complaint with USDA. Information about how to file a discrimination complaint is available from the Office of the Assistant Secretary for Civil Rights.

USDA prohibits discrimination in all its programs and activities on the basis of race, color, national origin, age, disability, and where applicable, sex (including gender identity and expression), marital status, family status, parental status, religion, sexual orientation, political beliefs, genetic information, reprisal, or because all or part of an individual's income is derived from any public assistance program. (Not all prohibited bases apply to all programs.)

To file a complaint of discrimination, complete, sign, and mail a program discrimination complaint form, available at any USDA office location or online at [www.ascr.usda.gov](http://www.ascr.usda.gov), or write to: USDA, Office of the Assistant Secretary for Civil Rights, 1400 Independence Avenue, SW, Washington, DC 20250- 9410; or call toll free at (866) 632-9992 (voice) to obtain additional information, the appropriate office or to request documents.

Individuals who are deaf, hard of hearing, or have speech disabilities may contact USDA through the Federal Relay service at (800) 877-8339 or (800) 845-6136 (in Spanish). USDA is an equal opportunity provider, employer, and lender. Persons with disabilities who require alternative means for communication of program information (e.g., Braille, large print, audiotope, etc.) should contact USDA's TARGET Center at (202) 720-2600 (voice and TDD).